



ifb
INSTITUT FRANÇAIS
DE BIOINFORMATIQUE



July 8, 2015



gtgalaxy@groupes.france-bioinformatique.fr

An Initiative to federate the galactic
community in France
The IFB Galaxy Working Group



Olivier
Inizan



Gildas
Le Corguillé



Alban
Lermine
(Away)





- 2012:

galaxy-
france

Cette liste est destinée à l'information (et aux discussions) de la Communauté française Galaxy. (This list is for announcements to (and discussion within) the French Galaxy Community. Most list content is in French.)
Faible volume / Low volume.





Galaxy-WORKshop
Tour De France
2012

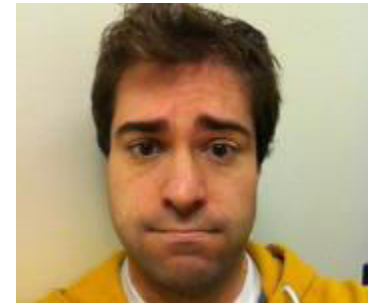
Paris (1st of June)
Lyon (30th of May)
Perpignan (28th of May)

Workshop for Biologists & Workshop for Developers
Presented by:
- Nate Coraor, Anton Nekrutenko & James Taylor -

28th of May:
Perpignan, hosted by
Observatoire Océanologique de Perpignan
Laboratoire ARAGO
1852
IFREMER • CNRS • IFRD

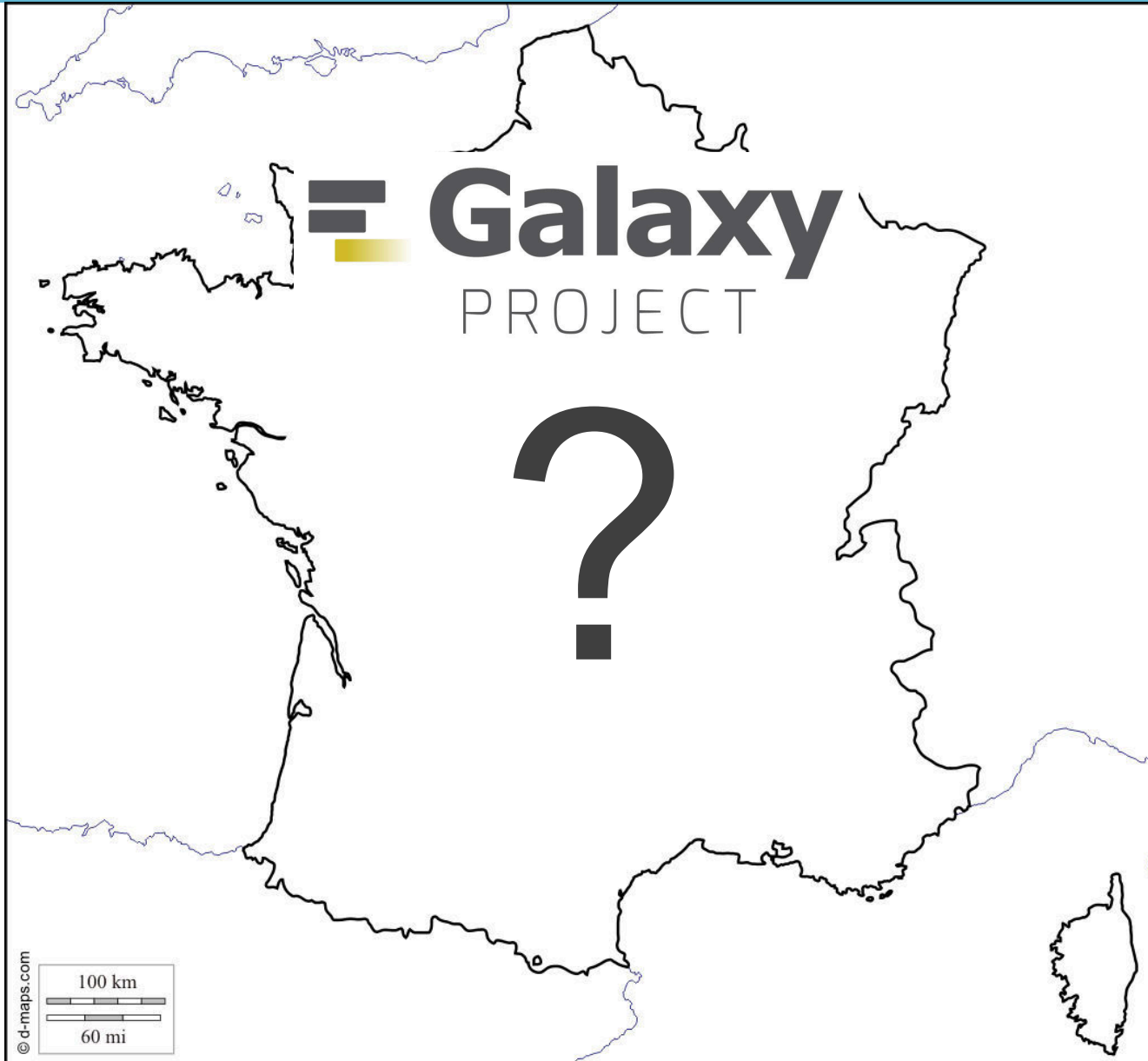
30th of May:
Lyon, hosted by
LBBE
BIOMÉTRIE ET BIOLOGIE ÉVOLUTIONNE

1st of June:
Paris, hosted by
institutCurie
Together, let's beat cancer.









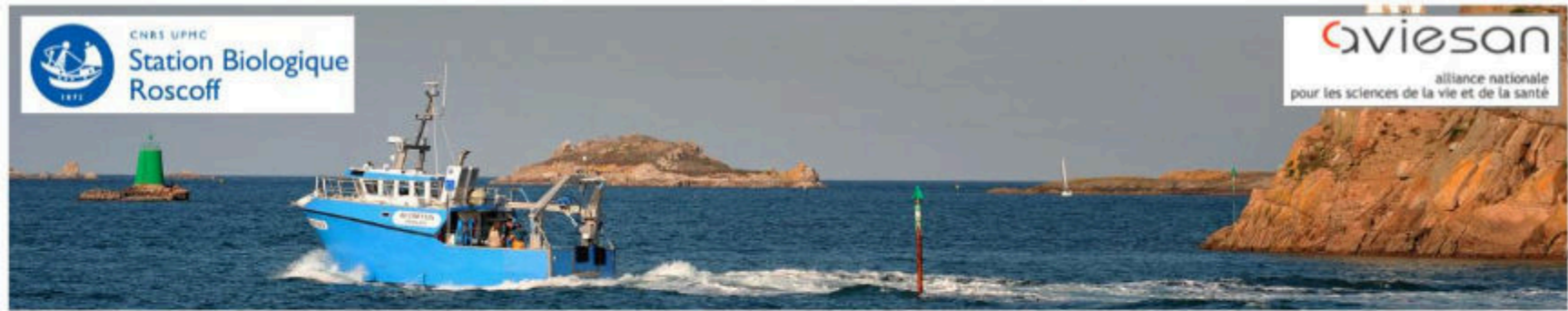
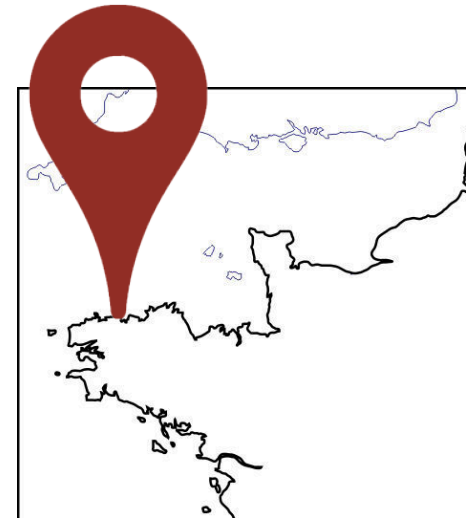
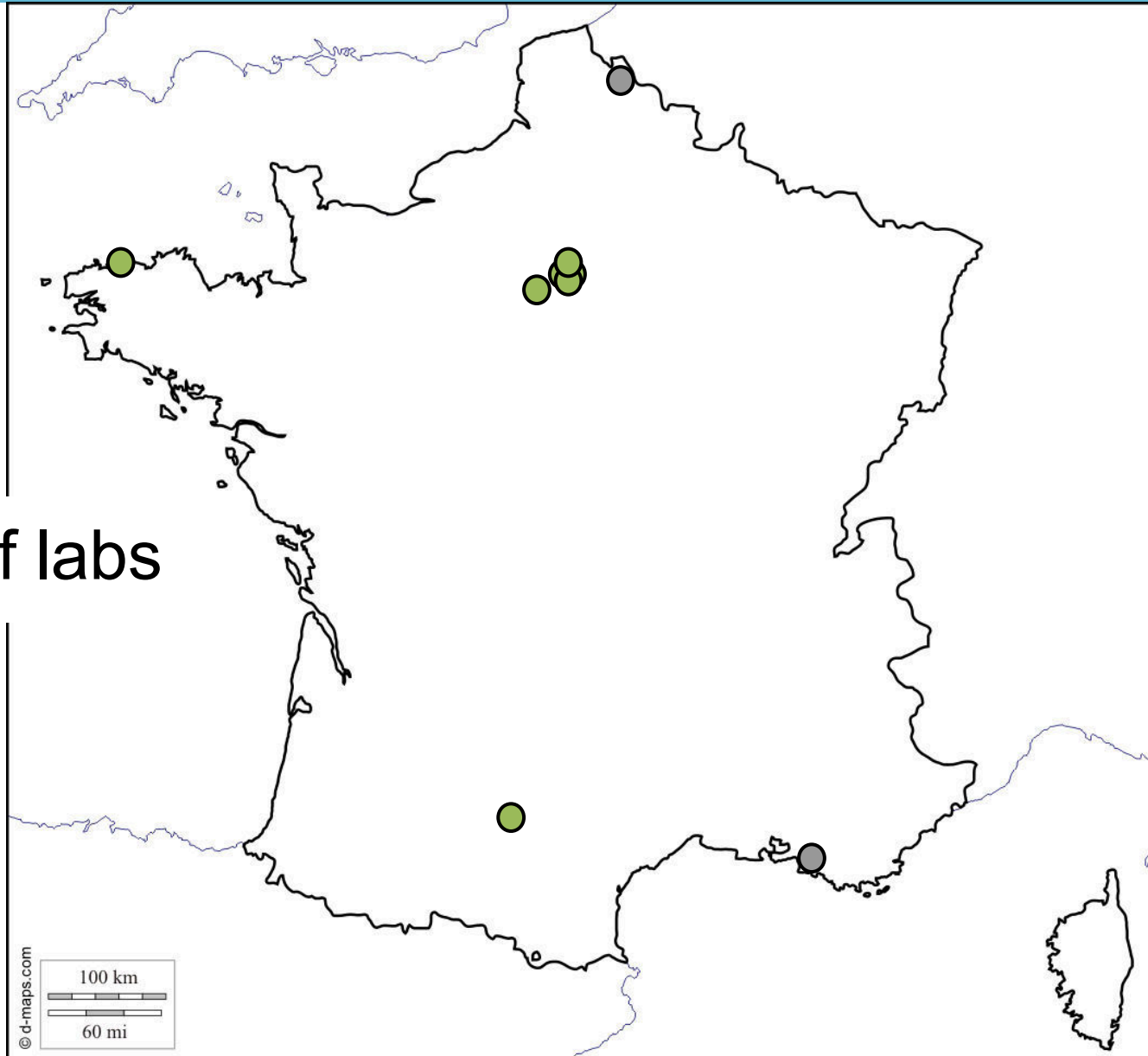


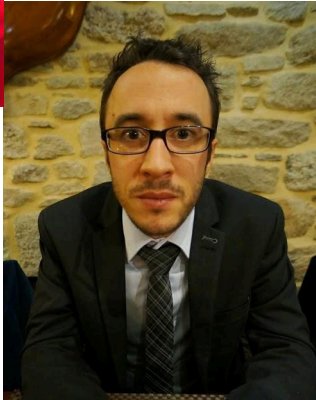
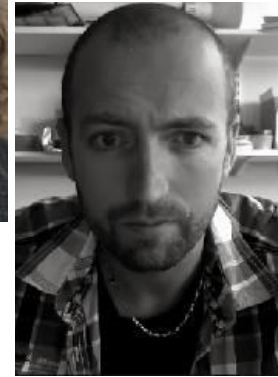
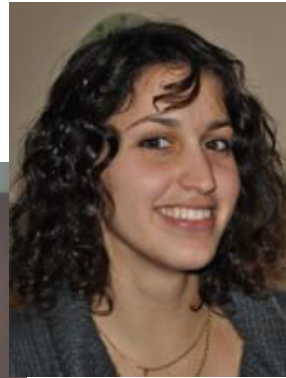
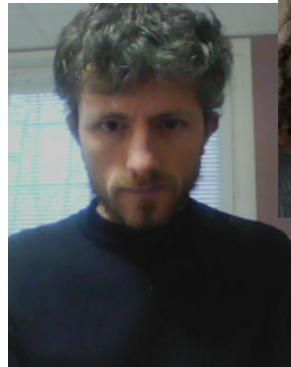
Photo W. Thomas

Ecole de bioinformatique
Initiation au traitement des données de génomique
obtenues par séquençage à haut débit
14 au 18 Janvier 2013, Station Biologique, Roscoff



Community of labs





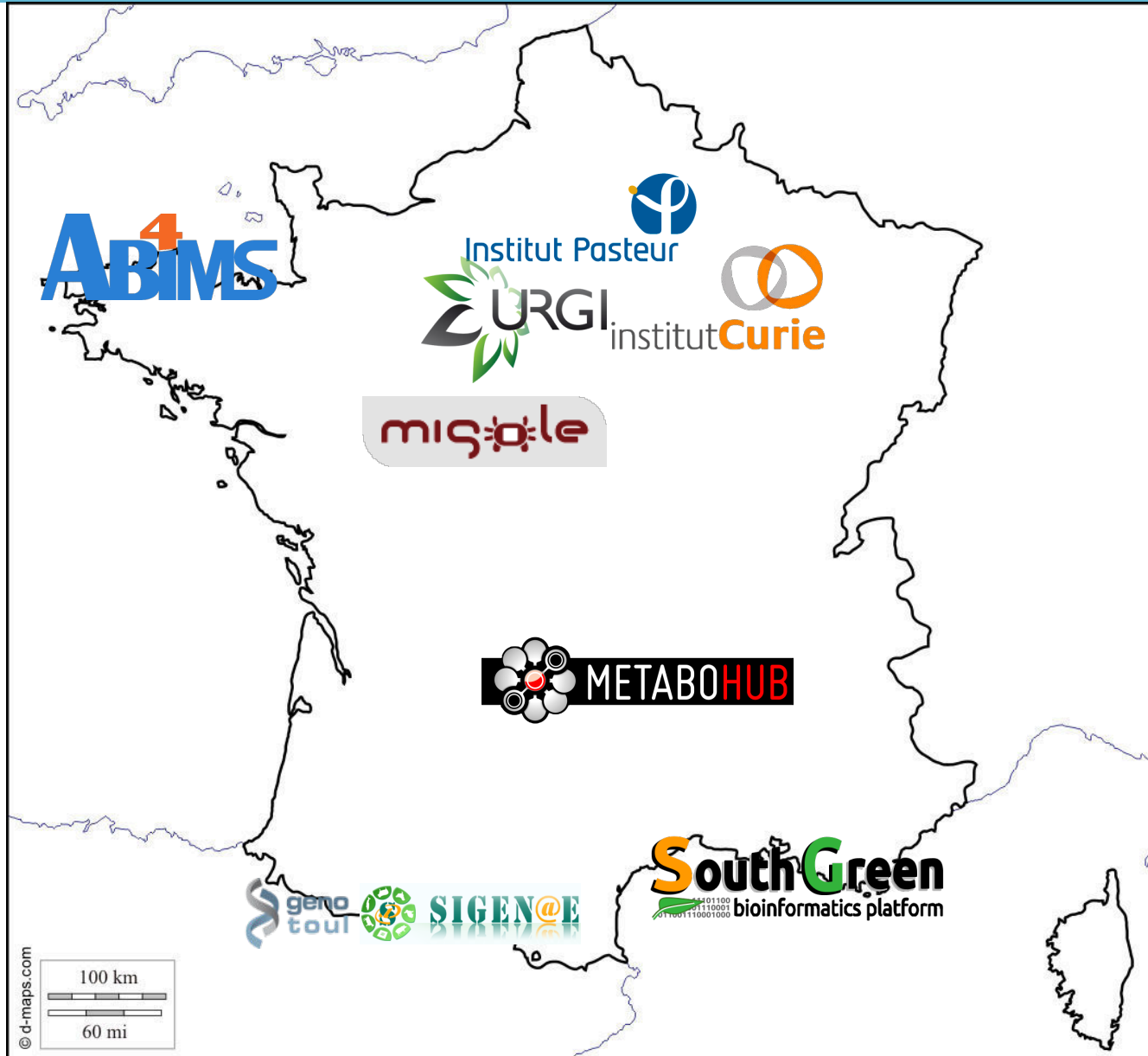


18 people

8 labs

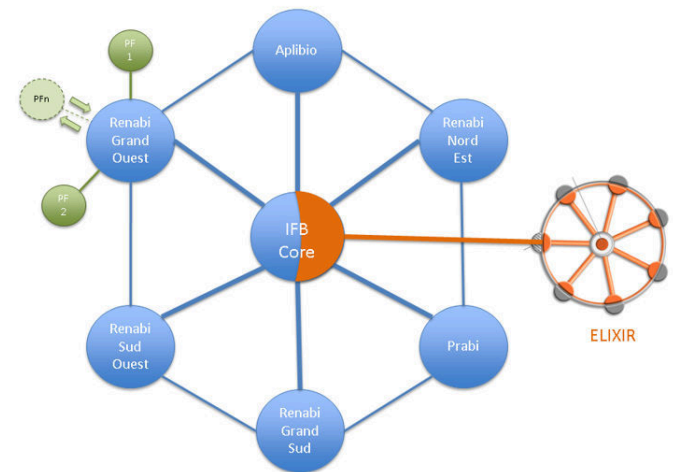
~20 instances

~2000/3000
accounts



- I.F.B is not a Federal Bureau ...
- I.F.B: The **F**rench **I**nstitute of **B**ioinformatics
- Provide basic services and resources in bioinformatics
- Dedicated to scientists and engineers
- IFB is the French node of the European research infrastructure, ELIXIR

=> WG has been missioned by IFB




ANIMATION

TRAINING & DISSEMINATION

SERVICES FOR COMMUNITIES

ANIMATION

- Biologist and bioinformatician

- 2013 & 2014:  institutCurie
 - 200 people / session
 - 15 talks / session

- Users feedback



- 2015 : Nov. 19  Institut Pasteur

Automatic Galaxy environment construction

Rapsosnp: A workflow for the Rapsodyn project

Galaxy-MODAL:

Deployment of a new Galaxy instance on IFB-cloud

Technical or Organizational topics

Rotation of the organization

Planned from this end of summer



TRAINING & DISSEMINATION



- **Bioinformatics “Autumn” school - AVIESAN**

- RNA-seq with reference or denovo
- Chip-seq
- RAD-seq
- SNP-calling and annotation
- Variant-calling

- 3 editions (next Oct. 2015)

- 5 days

- 40 [senior] students

- 30 teachers from 12 labs

+ Trainings on Platform

MR. BIOLOGIST



- **Bioinformatics “Autumn” school - AVIESAN**
 - RNA-seq with reference or denovo
 - Chip-seq
 - RAD-seq
 - SNP-calling and annotation
 - Variant-calling

 - 3 editions (next Oct. 2015)
 - 5 days
 - 40 [senior] students
 - 30 teachers from 12 labs
- + Trainings on Platform





- Galaxy4Bioinformatics

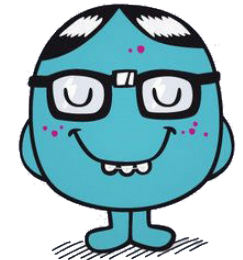


- Architecture
- Tools Integration / Good practices / Tips and Tricks
- Tool Shed
- API

- 4 days
- 2 sessions (next Nov. 2015)
- 20 students by session
- 12 teachers from 6 labs

- Federate platform skills

MR. GEEK





- Galaxy4Bioinformatics



- Architecture
- Tools Integration / Good practices / Tips and Tricks
- Tool Shed
- API

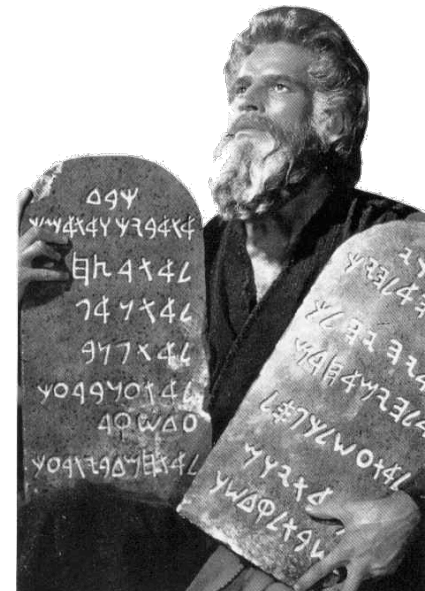
- 4 days
- 2 sessions (next Nov. 2015)
- 20 students by session
- 12 teachers from 6 labs

- Federate platform skills

MR. GEEK



- 3 guides (in English) : best practices
 - A quick start for tool integration into Galaxy : 6 pages
 - Advanced features for tool integration : 34 pages
 - The Galaxy Tool Shed : sharing Galaxy tools : 36 pages
- Tips and tricks
 - Apache configuration (LDAP and API)
 - Wrapping
 - Toolshed and API
- Version 1.0
 - <http://www.france-bioinformatique.fr/?q=fr/galaxy-working-group>

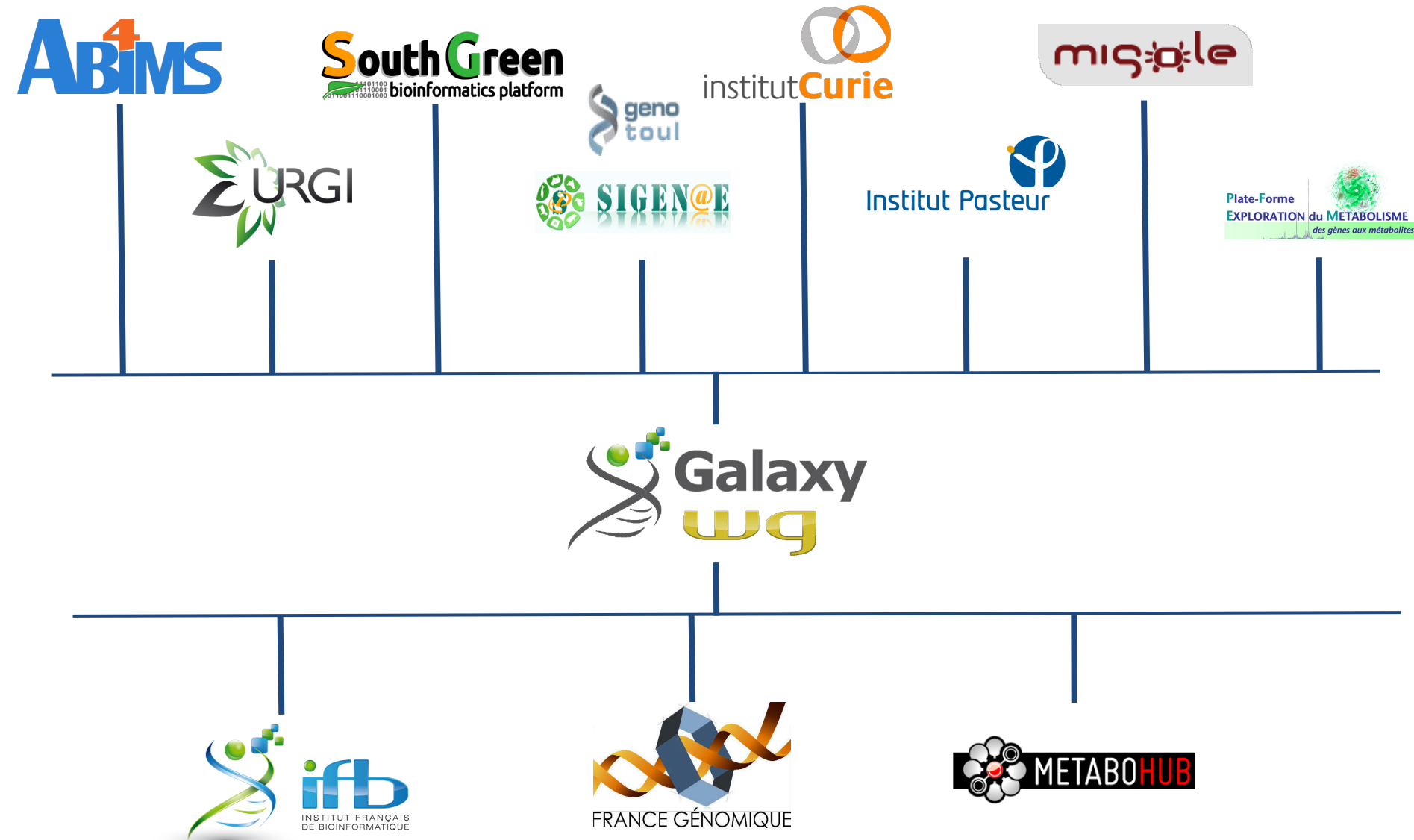


- 3 guides (in English) : best practices
 - A quick start for tool integration into Galaxy : 6 pages
 - Advanced features for tool integration : 34 pages
 - The Galaxy Tool Shed : sharing Galaxy tools : 36 pages
- Tips and tricks
 - Apache configuration (LDAP and API)
 - Wrapping
 - Toolshed and API
- Version 1.0
 - <http://www.france-bioinformatique.fr/?q=fr/galaxy-working-group>

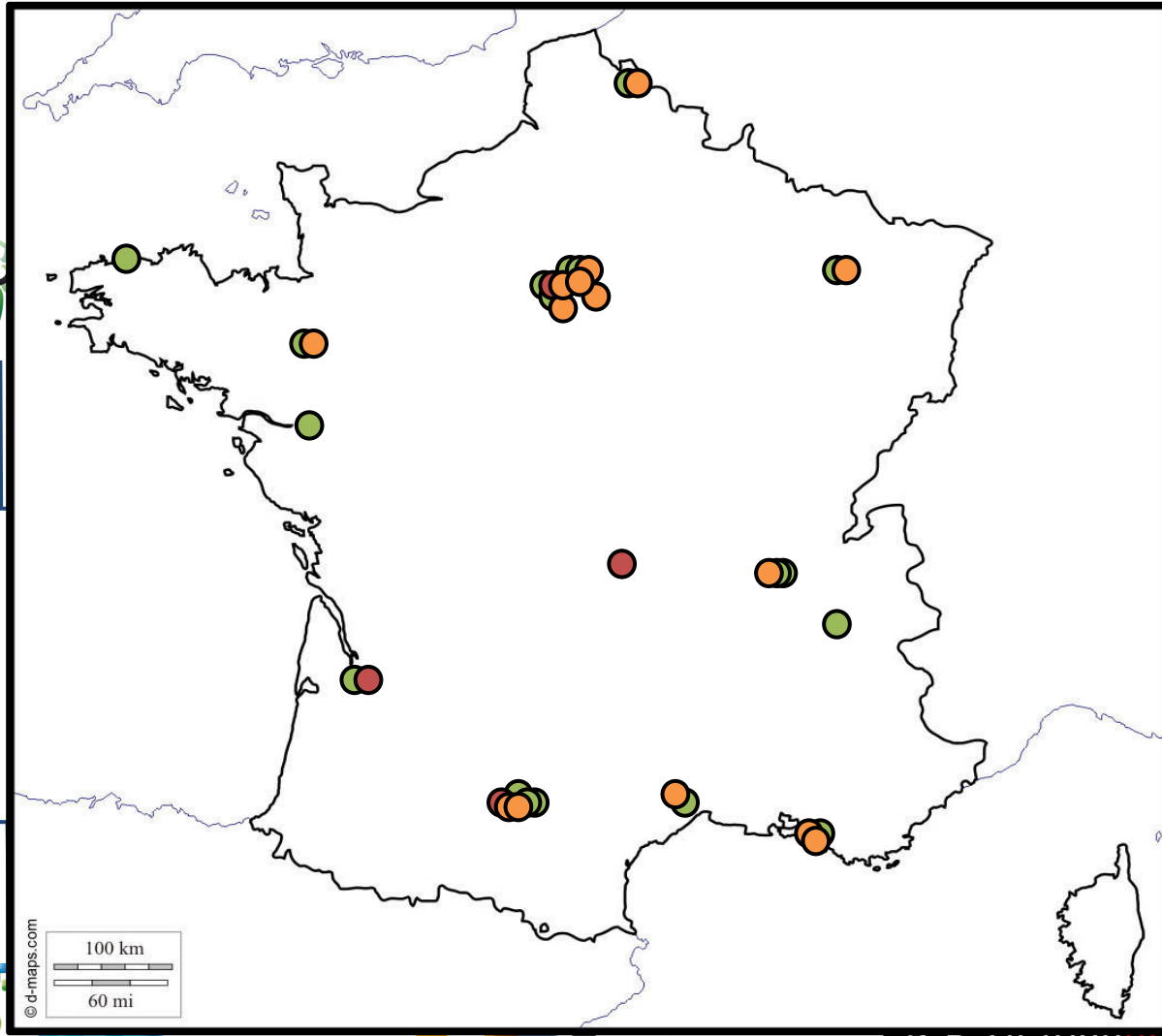


SERVICES FOR COMMUNITIES





ABIMS⁴



le

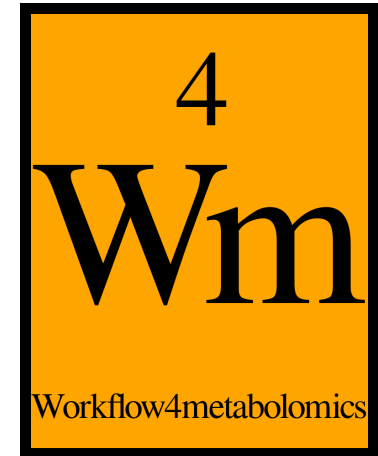
Plate-Forme
EXPLORATION du METABOLISME
des gènes aux métabolites



FRANCE GÉNOMIQUE



Workflow4Metabolomics.org



Giacomoni, Le Corguillé *et al.* Bioinformatics 2015

Bioinformatics, 31(9), 2015, 1493–1495
doi: 10.1093/bioinformatics/btu613
Advance Access Publication Date: 19 December 2014
Applications Note



Gene expression

Workflow4Metabolomics: a collaborative research infrastructure for computational metabolomics

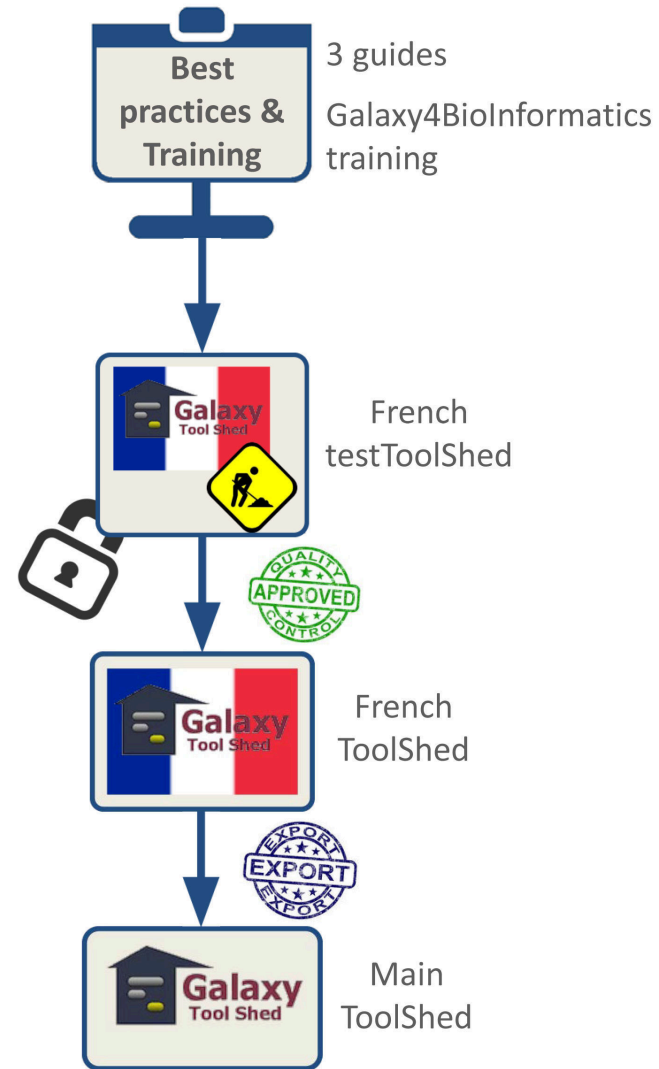
Franck Giacomoni^{1,*}, Gildas Le Corguillé^{2,*}, Mishar Monsoor², Marion Landi¹, Pierre Pericard², Mélanie Pétéra¹, Christophe Duperier¹, Marie Tremblay-Franco³, Jean-François Martin³, Daniel Jacob⁴, Sophie Goullitquer², Etienne A. Thévenot^{5,*} and Christophe Caron^{2,*}



The project: tools of the community hosted in a *dedicated Tool Shed*

=> visibility to our grant

=> beta releases and intranet access before public release in main



PERSPECTIVES

- Galaxy a as Hub : other community (proteomic), other labs ...
- Galaxy Day @ Institut Pasteur
- G4B v3 @ Toulouse
- Extend best Practices Guides (admin ...)
- ELIXIR links (Elixir session yesterday)



THANKS FOR YOUR ATTENTION!

Galaxy Day - Institut Pasteur, Paris - Nov 15

G4B v3 - Genotools, Toulouse - Oct 15

Contacts:

<http://www.france-bioinformatique.fr/?q=fr/galaxy-working-group>
gtgalaxy@groupes.france-bioinformatique.fr

