

An Introduction to Using Galaxy for Genetic Data Analysis

TAGC 2016

July 16, 2016

Dave Clements

Galaxy Team

Johns Hopkins University

<http://galaxyproject.org/>



#usegalaxy @galaxyproject

Agenda

A quick stroll through the Galaxy

Demonstrate Galaxy by addressing a specific question

Other Features and Galaxy Ecosystem Update

<http://galaxyproject.org>

What is Galaxy?

Keith Bradnam's definition:

"A web-based platform that provides a simplified interface to many popular bioinformatics tools."

From

"13 Questions You May Have About Galaxy"

<http://bit.ly/13questions>

<http://galaxyproject.org>

Galaxy is available several ways ...

<http://galaxyproject.org>

As a free for everyone service on the web: usegalaxy.org

Galaxy is an open source, web-based platform for data intensive biomedical research. If you are new to Galaxy [start here](#) or consult our [help resources](#). You can install your own Galaxy by following the [tutorial](#) and choose from thousands of tools from the [Tool Shed](#).

Running Your Own

Understanding how Galaxy works

An in-depth tutorial



Tweets by @galaxyproject

 Galaxy Project Retweeted



Hans-Rudolf Hotz @hrhotz

check out this useful resource for #usegalaxy training and teaching material from @bjoerngruening and his team: wiki.galaxyproject.org/Teach/Resource...



Galaxy Project @galaxyproject

GCC2016 student/postdoc
#underrepresentedgroups scholarships. Apply
by May 1 [bit.ly/gcc2016scholar...](http://bit.ly/gcc2016scholar) #usegalaxy

Embed


[View on Twitter](#)



Explore the
Galaxy with
RNA-Rocket

PATHOGENPORTAL
THE BIOINFORMATICS RESOURCE CENTERS PORTAL

Galaxy / Metabiome Portal



The Microbiome Analysis Center
Life on a Smaller Scale

Welcome to the Metabiome Portal @ GMU

We have developed the MAC Metabiome Portal, a flexible and customizable web browser, with the ability to display, analyze, and visualize microbiome data. The portal is designed to be a central hub for microbiome data, providing a single point of access to a wide range of microbiome data, including raw data, processed data, and analysis results. The portal is designed to be a central hub for microbiome data, providing a single point of access to a wide range of microbiome data, including raw data, processed data, and analysis results.

香港中文大學 - 華大基因跨組學創新研究院
CUHK-BGI Innovation Institute of Trans-Omics

GIGAⁿ Galaxy
by CBIIT

Integrated publishing of workflows from **GIGA**ⁿ SCIENCE

Cistrome



A Galaxy Server
dedicated to
ChIP-* analysis




Public Galaxy Servers
and *still* counting



The Genomic
HyperBrowser

Powered by Galaxy

SCDE
STEM CELL DISCOVERY ENGINE



**Experiments
Connected**



Whale Shark Galaxy! 

South Green
bioinformatics platform

**Genomic analysis tools
for southern and
Mediterranean plants**

bit.ly/gxyServers

Galaxy is available as Open Source Software

Galaxy is installed in locations around the world.

<http://getgalaxy.org>

Galaxy is available on the Cloud



<http://aws.amazon.com/education>

<http://globus.org/>

<http://wiki.galaxyproject.org/Cloud>

Agenda

A quick stroll through the Galaxy

Demonstrate Galaxy by addressing a specific question

Other Features and Galaxy Ecosystem Update

<http://galaxyproject.org>

Tutorial

http://bit.ly/TGAC_GXY_PDF

<http://galaxyproject.org>

Pronephros and Kidney

Particular
phenotype we are
looking into are
dilated renal
tubules.

(Why?)

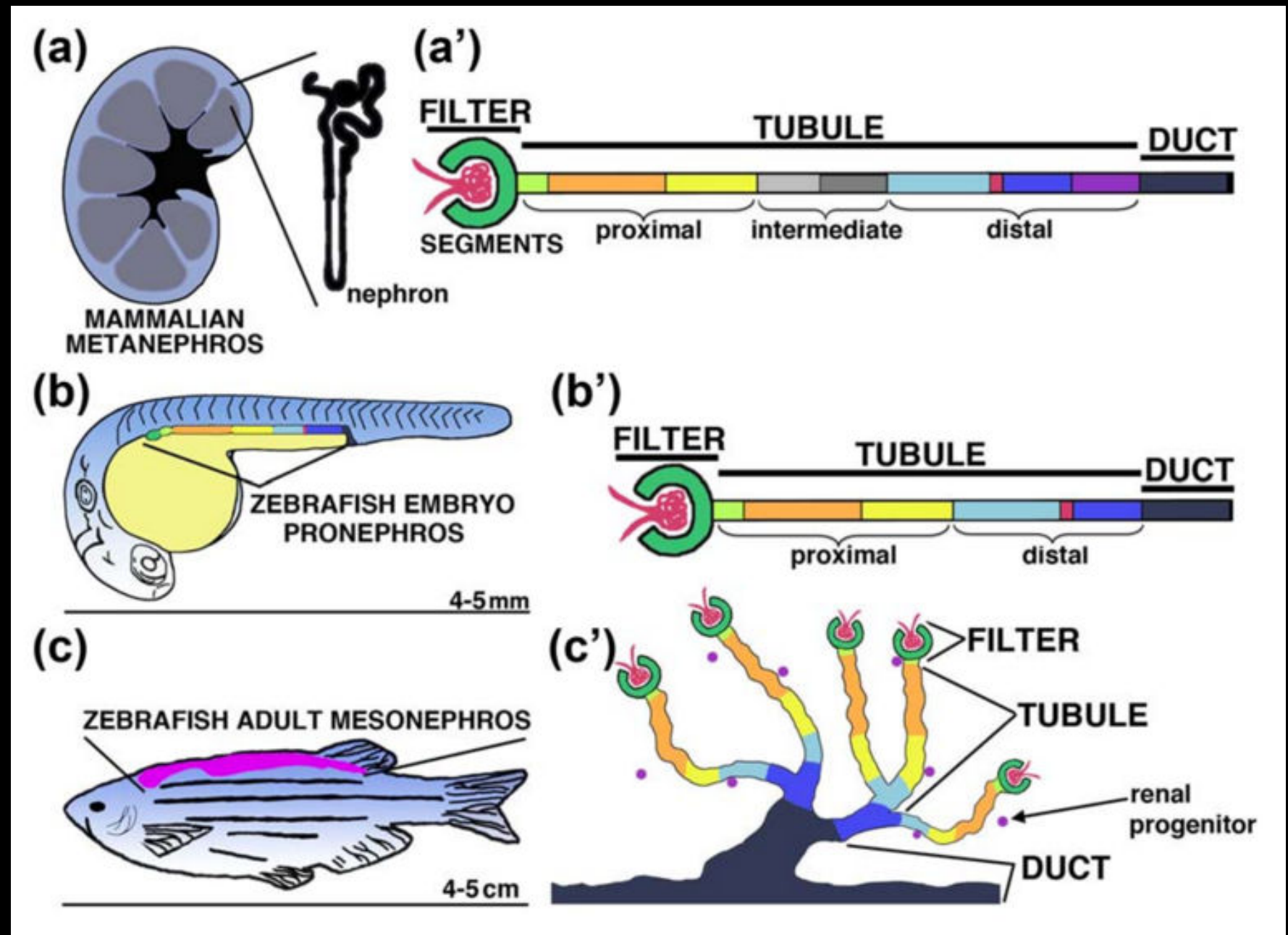


Fig. 1. Kroeger, P. T. and Wingert, R. A. (2014), Using zebrafish to study podocyte genesis during kidney development and regeneration. *Genesis*, 52: 771–792. doi: 10.1002/dvg.22798

Agenda

A quick stroll through the Galaxy

Demonstrate Galaxy by addressing a specific question

Other Features and Galaxy Ecosystem Update

<http://galaxyproject.org>

2016 Galaxy Community Conference (GCC2016)

June 25-29, 2016

Bloomington, Indiana

galaxyproject.org/GCC2016

Slides & posters are now
online. Video will be shortly



Join us in beautiful

Bloomington, Indiana

for the 2016 Galaxy
Community Conference
and pre-conference activities!

June 25-29, 2016



Considered one of the five
prettiest campuses in the US,
Indiana University is one of
the major public research
universities in the nation, and
home to the National Center
for Genome Analysis Support.



galaxyproject.org/gcc2016



gcc2017.sciencesconf.org

November 7-11



Salt Lake City, Utah



#GAMe2017
@EMBL_ABR

GAMe 2017

Galaxy Australasia Meeting

3 - 9 February, Melbourne, Australia

www.embl-abr.org.au/GAMe2017

Galaxy Community Resources: Galaxy **Biostar**

Tens of thousands of users leads to a lot of questions.

Absolutely have to **encourage community support.**

Project traditionally used mailing list

Moved the **user support list** to **Galaxy Biostar**, an online **forum**, that uses the Biostar platform



<https://biostar.usegalaxy.org/>

Scaling Training

Galaxy Training Network: Trainer Locations

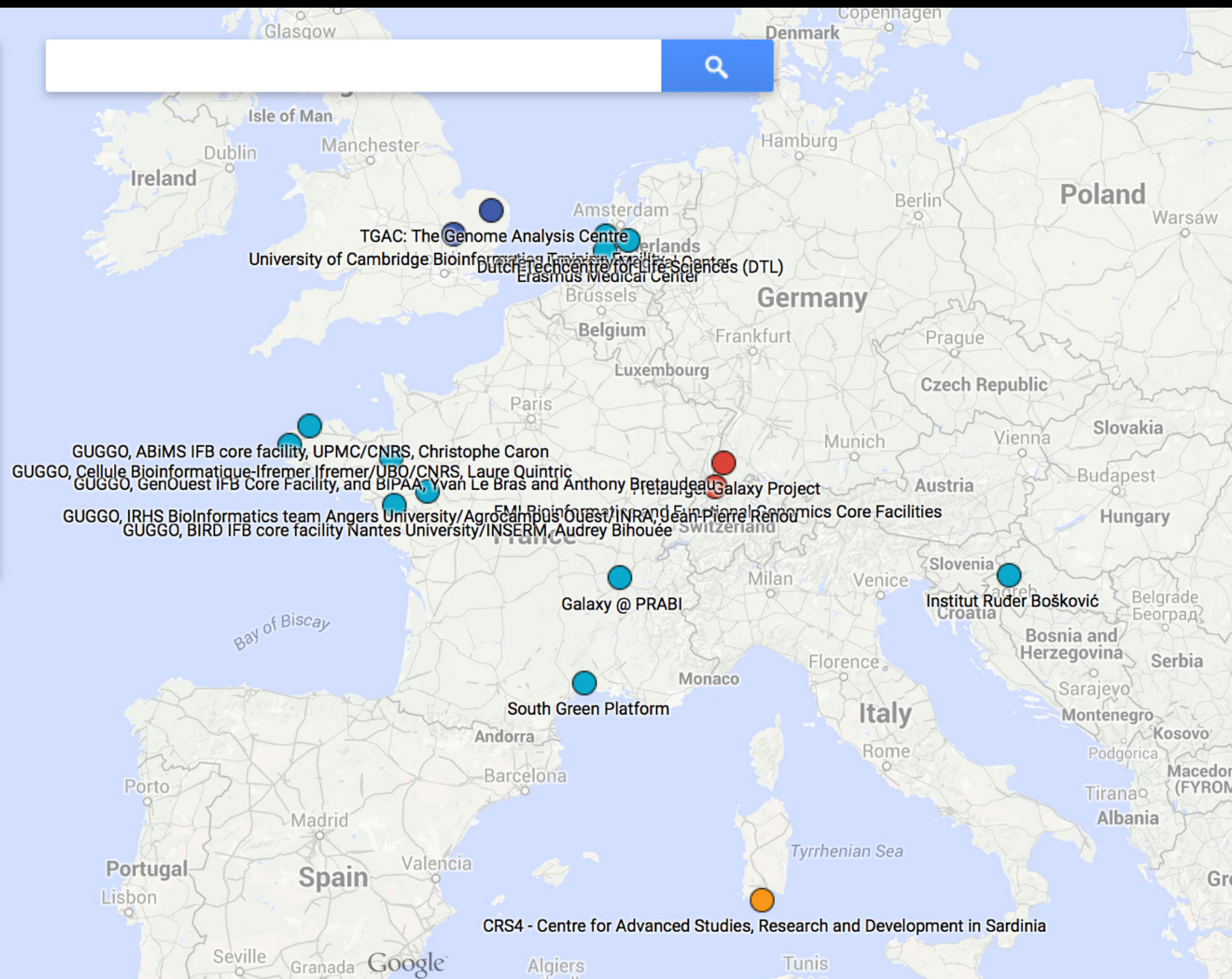
The Galaxy Training Network
(<https://wiki.galaxyproject.org/Teach/GTN>)



Made with Google My Maps

☒ Trainers

- Global
- Regional
- Local
- Continental
- Institution



Galaxy Training Network

bit.ly/gxygtn

The Galaxy Team



Enis Afgan



Dannon Baker



Dan Blankenberg



Dave Bouvier



Marten Cech



John Chilton



Dave Clements



Nate Coraor



Carl Eberhard



Jeremy Goecks



Sam Guerler



Jen Jackson



Ross Lazarus



Anton Nekrutenko



Nick Stoler



James Taylor



Nitesh Turaga

<http://wiki.galaxyproject.org/GalaxyTeam>

Acknowledgements

You

TAGC 2016 and GSA

NIH

Johns Hopkins University

Penn State University



Thanks

